

FREQUENTLY ASKED QUESTIONS



I am unable to get the VetPen® to work

Using the VetPen is simple, but it requires some explanation and a little practice. Your veterinary team will take the time to explain how it works so that it becomes second nature to you.

The dial is not returning to the starting line (—)

Keep your finger pressed on the release button until the dial returns to the starting line. Make sure that the palm of your hand is not blocking the dial's rotation. Make sure the needle is not blocked.

There are a few drops at the tip of the needle after injection

Wait at least 5 seconds before removing the needle from the skin after the injection. If needed, check with your veterinary team that your technique is correct.

caninsulin
VetPen
Redefining pet diabetes
management

caninsulin
VetPen
Redefining pet diabetes
management

HOW TO USE VetPen® IN 3 STEPS

THE FIRST INSULIN PEN
EXCLUSIVELY FOR PETS



This brochure is provided to veterinary professionals as educational material for owners of diabetic animals treated with Caninsulin®.

MERCK® is a registered trademark of Merck Sharpe & Dohme Corp. Used under license.
CANINSULIN® and VETPEN® are registered trademarks of Intervet International B.V. Used under license.
Copyright © 2024 Merck & Co., Inc., Rahway, NJ, USA and its affiliates. All rights reserved.
CA-VTP-240100002

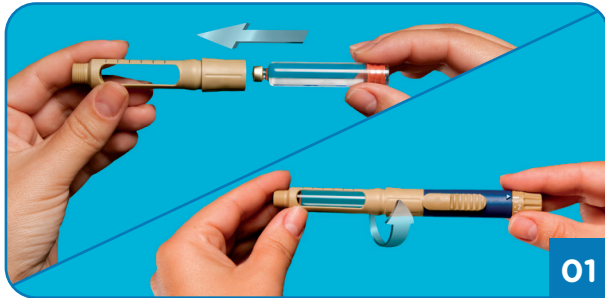


 **MERCK**
Animal Health

 **MERCK**
Animal Health

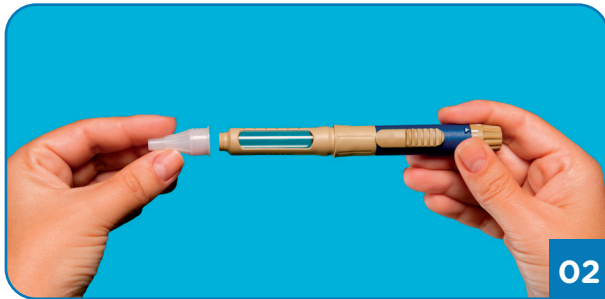
1

PREPARING THE VetPen®



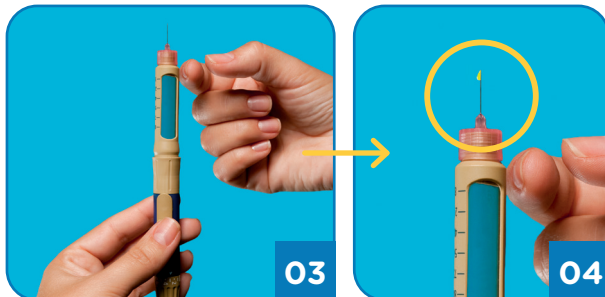
01

Remove the protective cap and unscrew the cartridge holder. Remove the used cartridge if needed. Before each use, turn the new cartridge up and down at least 10 times until the insulin appears uniformly milky. Ensure plunger is retracted. Insert the cartridge and screw the cartridge holder and VetPen® body together gently but firmly.



02

Remove the protective film from the new needle. Screw the needle onto the cartridge holder. Remove the outer needle cap.



03

04

Select a dose of one unit. Holding the VetPen® vertically with the needle pointing up, tap the cartridge with your finger a few times. Push the release button to expel air bubbles. Repeat these steps until there are no visible air bubbles in the cartridge and a drop of insulin drips from the tip of the needle.

2

INJECTING THE INSULIN



05

Make sure that the arrow ► on the body of the insulin pen points to the starting line on the dose selector. Choose the number of insulin units needed for your dog or cat, according to your veterinarian's prescribed instructions. Never attempt to forcefully dial back the dose selector. This can damage or break the VetPen® and result in inaccurate dosing.

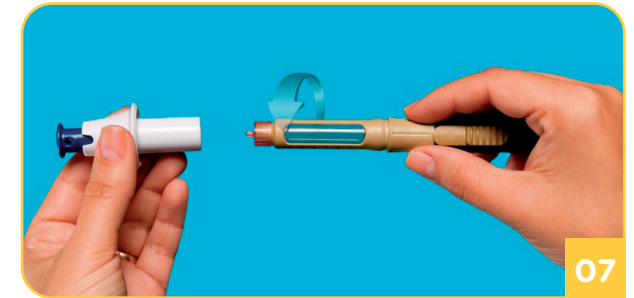


06

The injection must be made subcutaneously, 2 to 5 cm from the dorsal midline, varying from behind the scapulae (shoulder) to the mid-lumbar region (mid-back). Using the method shown by your veterinarian, inject the insulin under the skin by pushing the release button toward the needle. Keep your finger pressed on the release button until the starting line (—) on the dial returns to the arrow ►. Make sure that your hand does not impede the rotation of the dose selector. Wait 5 seconds before removing the needle.

3

AFTER USE



07

After the injection, insert the needle into the needle remover and unscrew it. Press the blue button on the needle remover to push the needle into an appropriate sharps collector for medical waste. Place the cap back on the insulin pen. The remaining contents in the cartridge must be used within 28 days and kept at a temperature below 25 °C.

TO HELP MANAGE YOUR
PET'S DIABETES, WE CREATED
THIS APP JUST FOR YOU!

Download it for free today:



Apple and the Apple logo are trademarks of Apple Inc., registered in the U.S. and other countries. App Store is a service mark of Apple Inc., registered in the U.S. and other countries. Google Play and the Google Play logo are trademarks of Google LLC.

